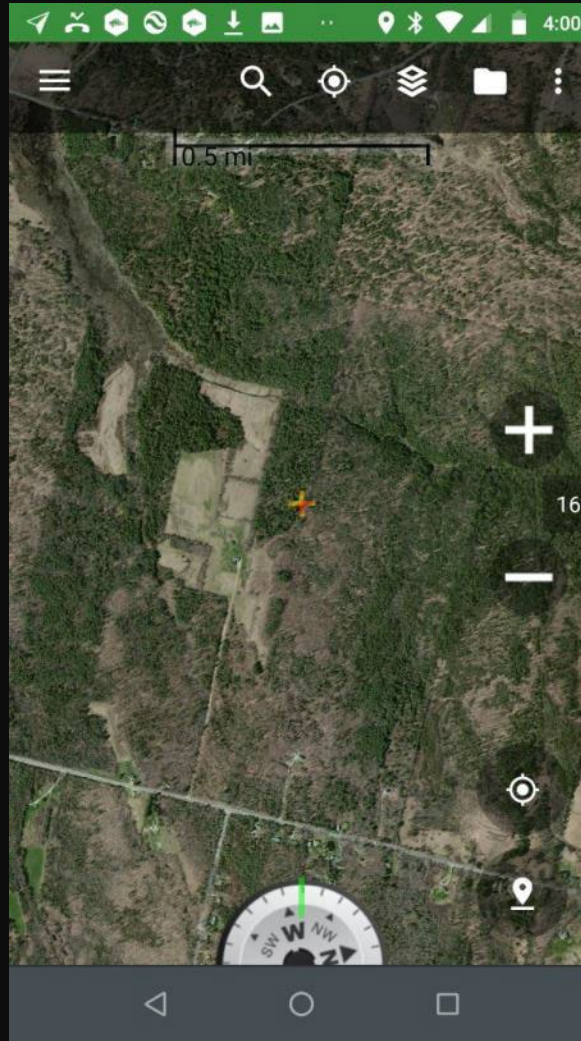
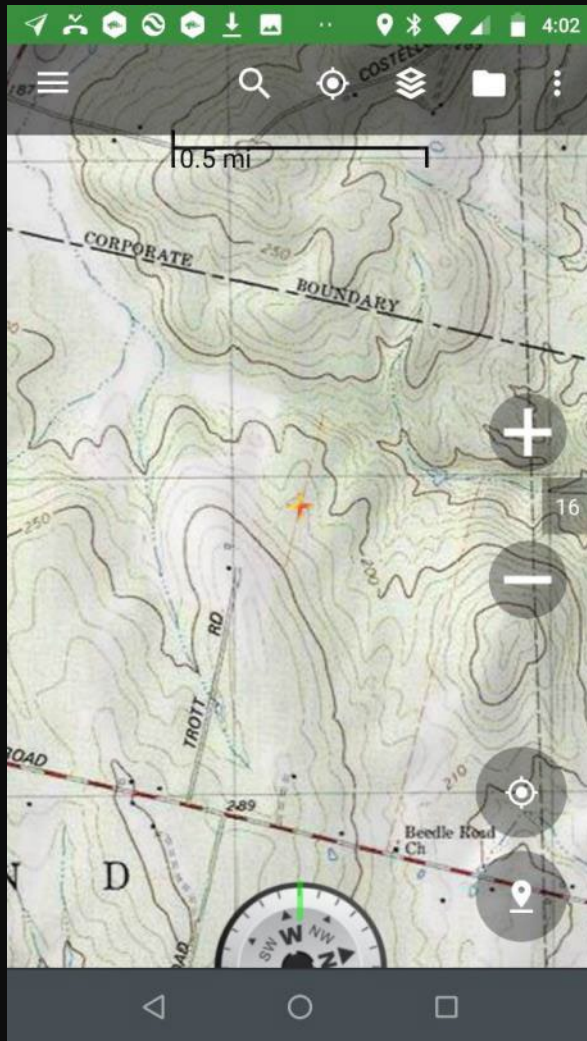


Internet Scouting



***New England
Backcountry
Hunters and
Anglers***





Seminar Overview

- Where to start
- What to look for
- Internet scouting tools
 - Google Earth
 - State Resources
 - Town Resources
 - Apps



Why Scout?

- **It's Fun**
 - Excuse to get outside
- **To Find the Animals**
- **Understanding wildlife**
- **Developing a Search Image**
- **Aware & Present**
 - You will never see the land the same way





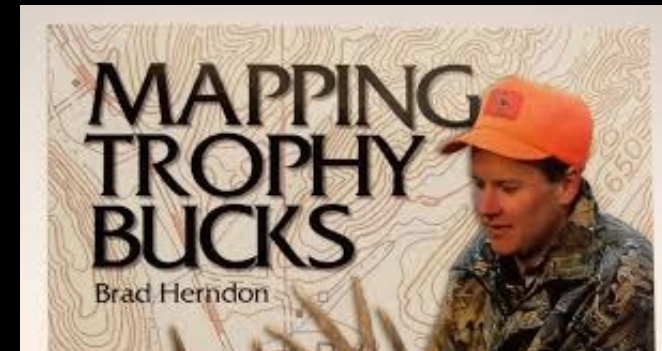
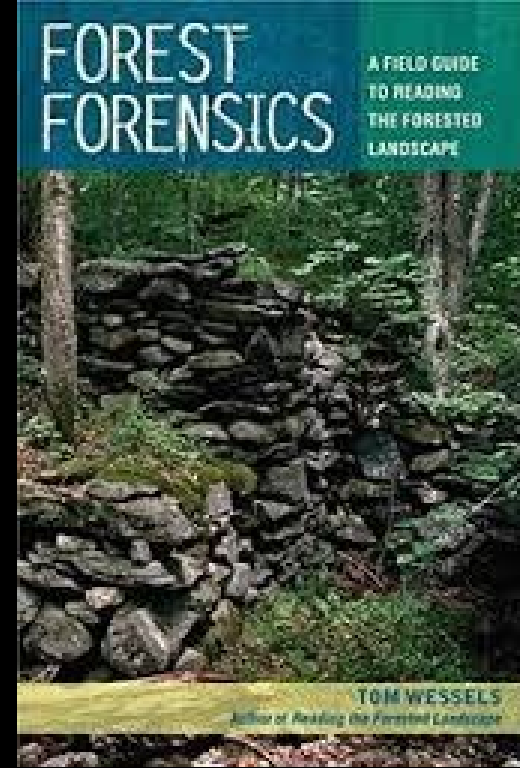
Where to Start?

Understand the Species Biology & the Habitat

- Books, Podcasts, YouTube
 - Not just on deer but on trees/plant ID

Equipment

- Computer/tablet/phone
- Boots
- GPS
- Binoculars



WIRED TO HUNT



What To Look For?

Cover

Thick cover is essential for

- Bedding,
- Security
- Food

Where to find

- 5-20 yr old timber harvests
- Abandoned fields
- Wetlands

If it looks tough to get into its good cover





What To Look For?

Food

Spring-Summer

Forbs- herbaceous broad leaved flowering plants that are not graminoids (grasses, sedges and rushes), often considered weeds.

Late Summer Early Fall

- Apples, corn, beans

Fall-Winter

- Acorns/beechnuts & Woody Browse

Food abundance is cyclical

- Acorns every 3-4yrs (for red oak)
- Apples every other year

A lot of feeding is nocturnal





What To Look For? Edges

Deer are creatures of edge

- Agriculture Edges
- Logging Edges
- River/Stream
- Human Edges
 - Development/Golf Courses
 - Posted Land

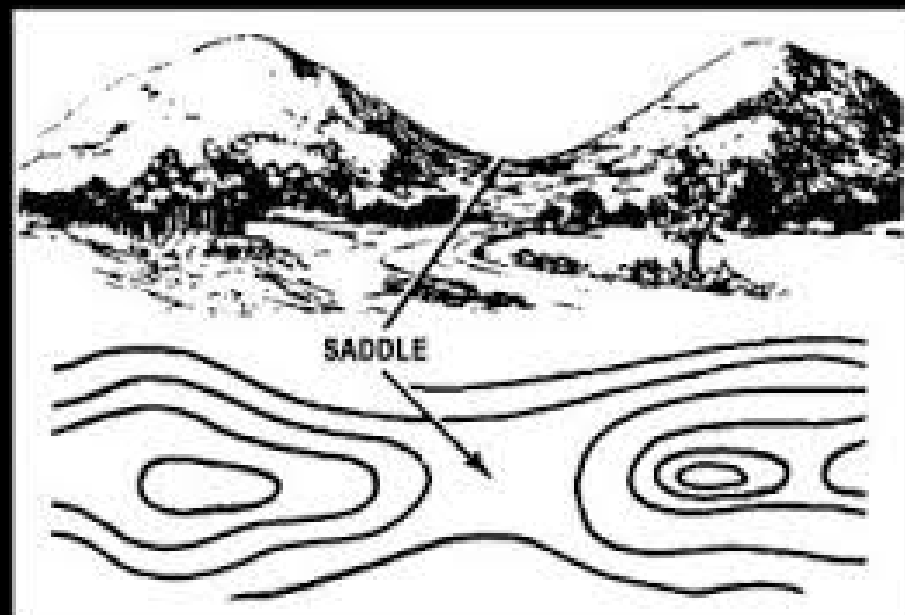




What To Look For? Terrain

Topography, Pinch Points & Funnels

- Concentrate & Influences where deer move
- Important during the rut
- Influences where deer bed
- Scent and sight advantage
- Influences Humans
- Critical to understand in hilly country





Internet Scouting

- Aerial Imagery
 - Leaf off
 - Historical orthos
 - 3D terrain
- USGS Topos
- Property lines
- Open Space, Wetlands

Where to Find

- Google Earth,
- State GIS viewers,
- Town assessor website



Agriculture

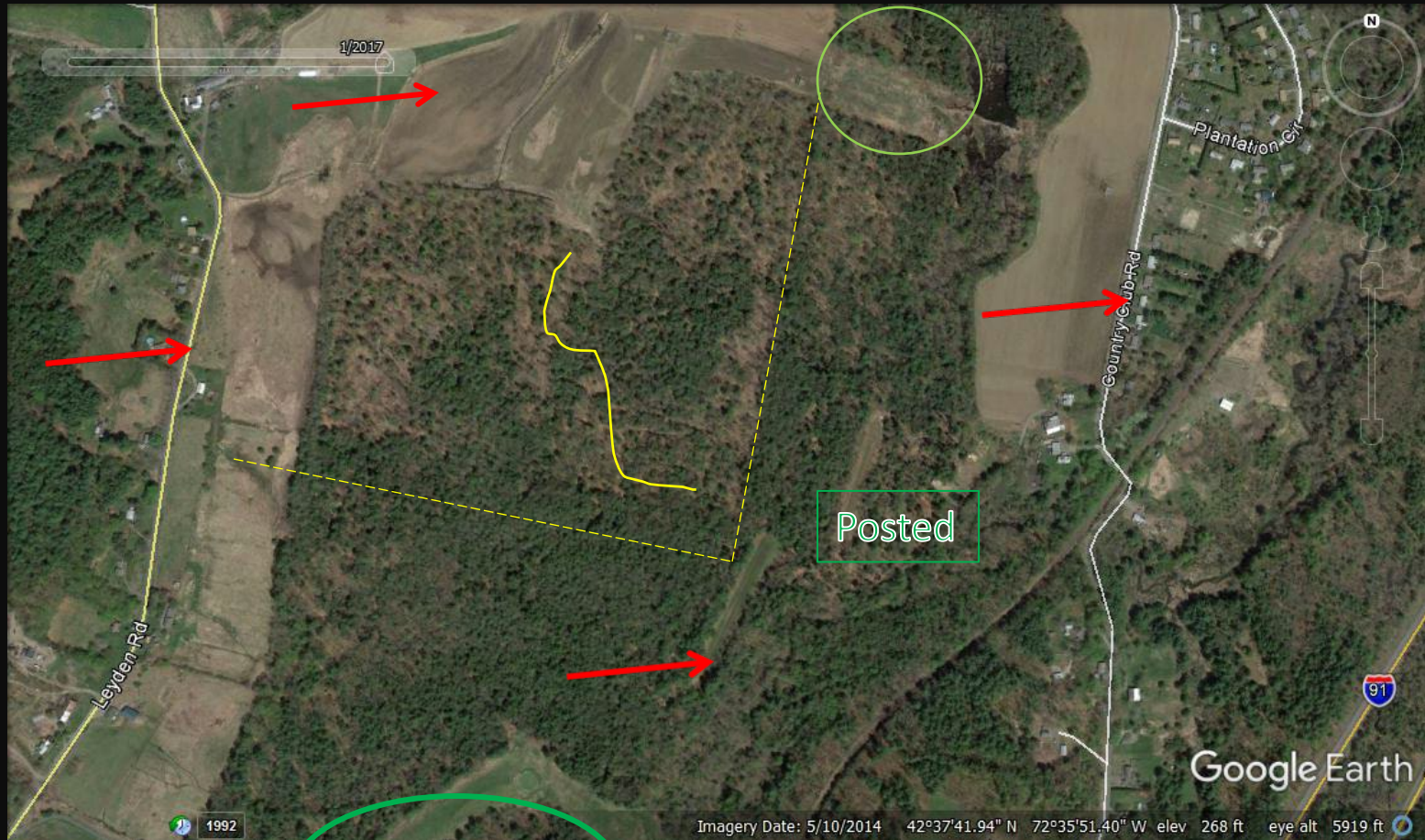
- Food

Logging

- Cover
- Food

Human

- Sanctuary/Cover



Terrain

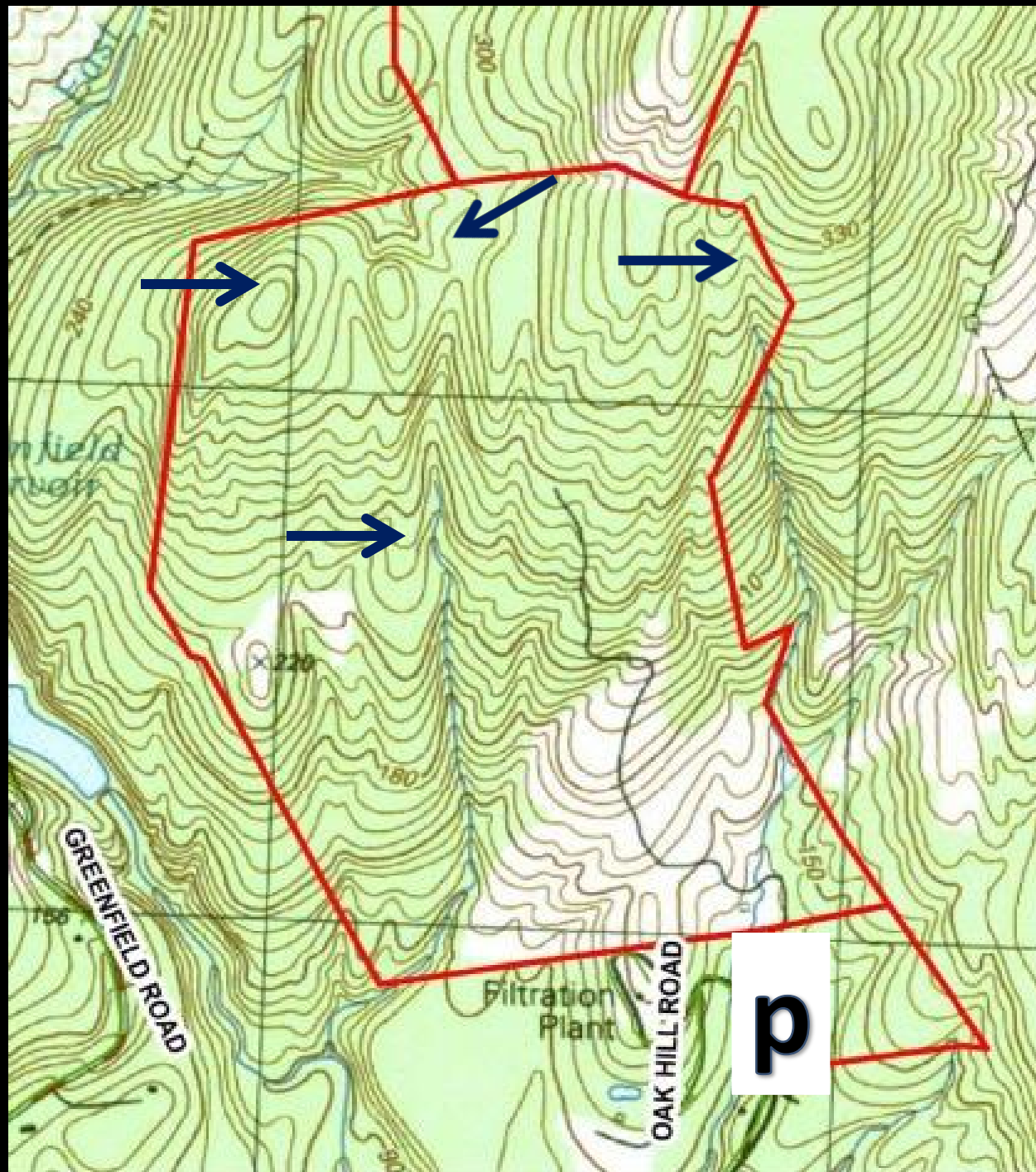
- Wetlands/River
- Pinch Points/Funnels





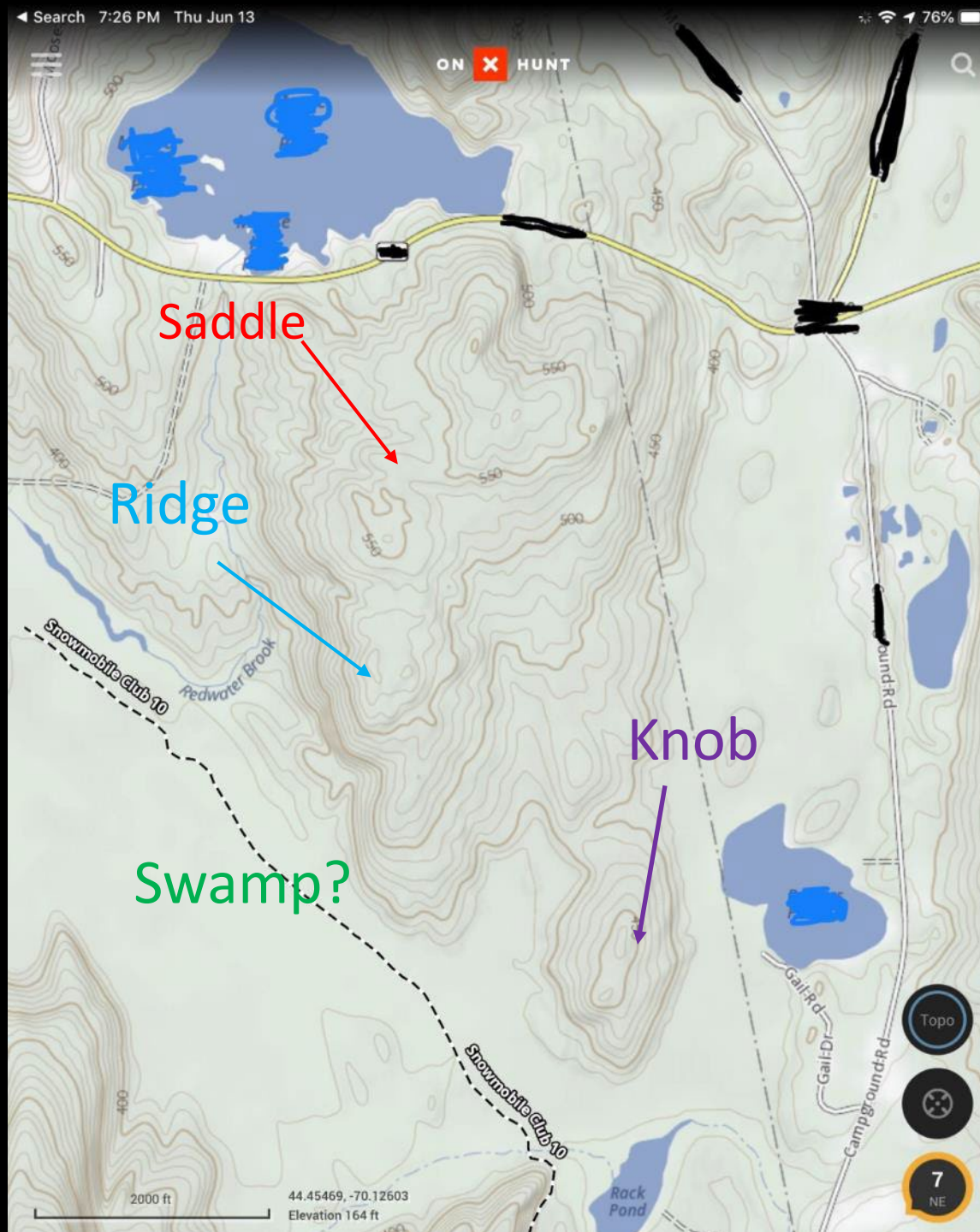
Backwoods Deer

- **Ridges and saddles:** travel
- **Knobs and thick cover:** bedding
- **Food sources:** acorns, leafy and woody browse



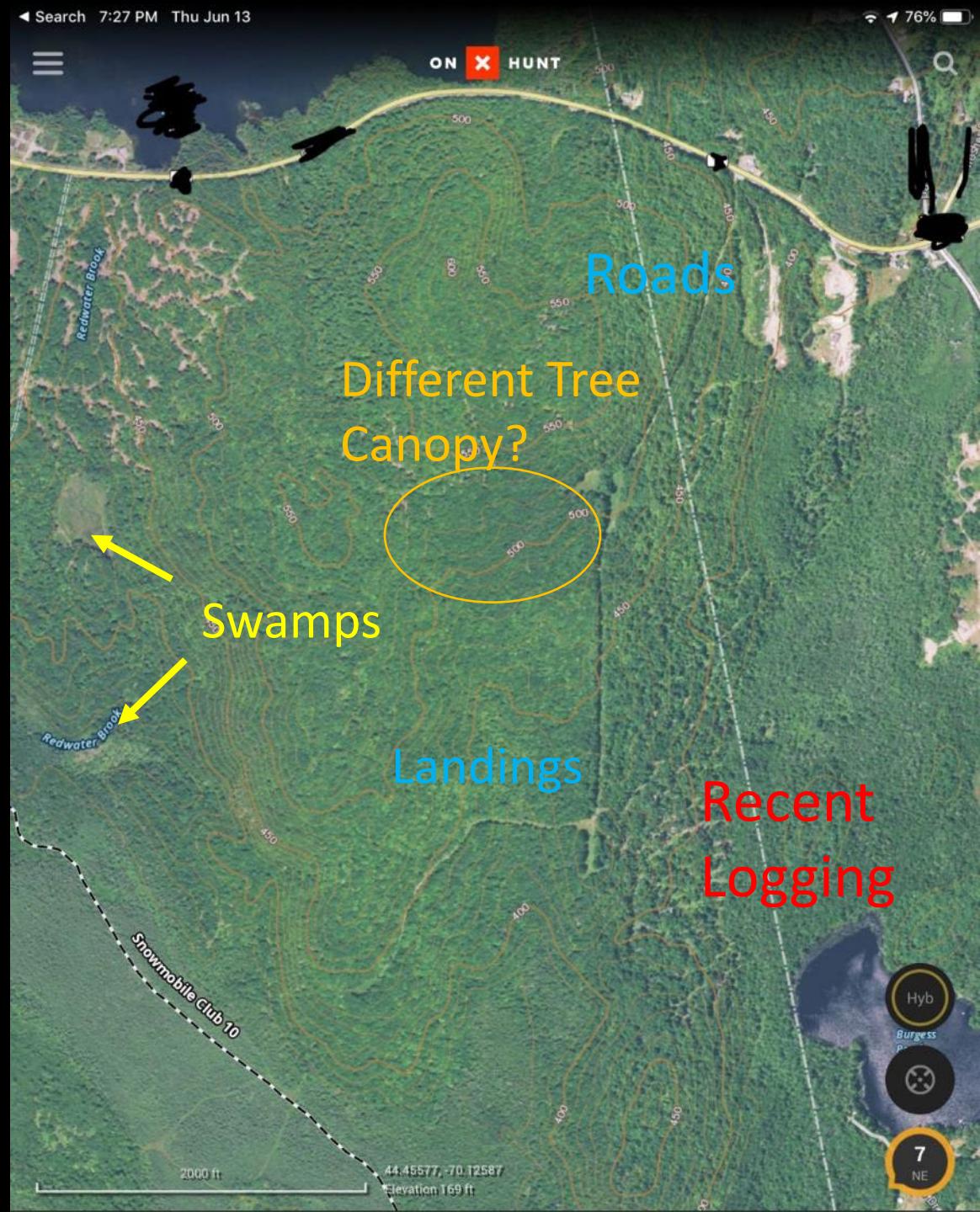


What
topographical
features do you
see?



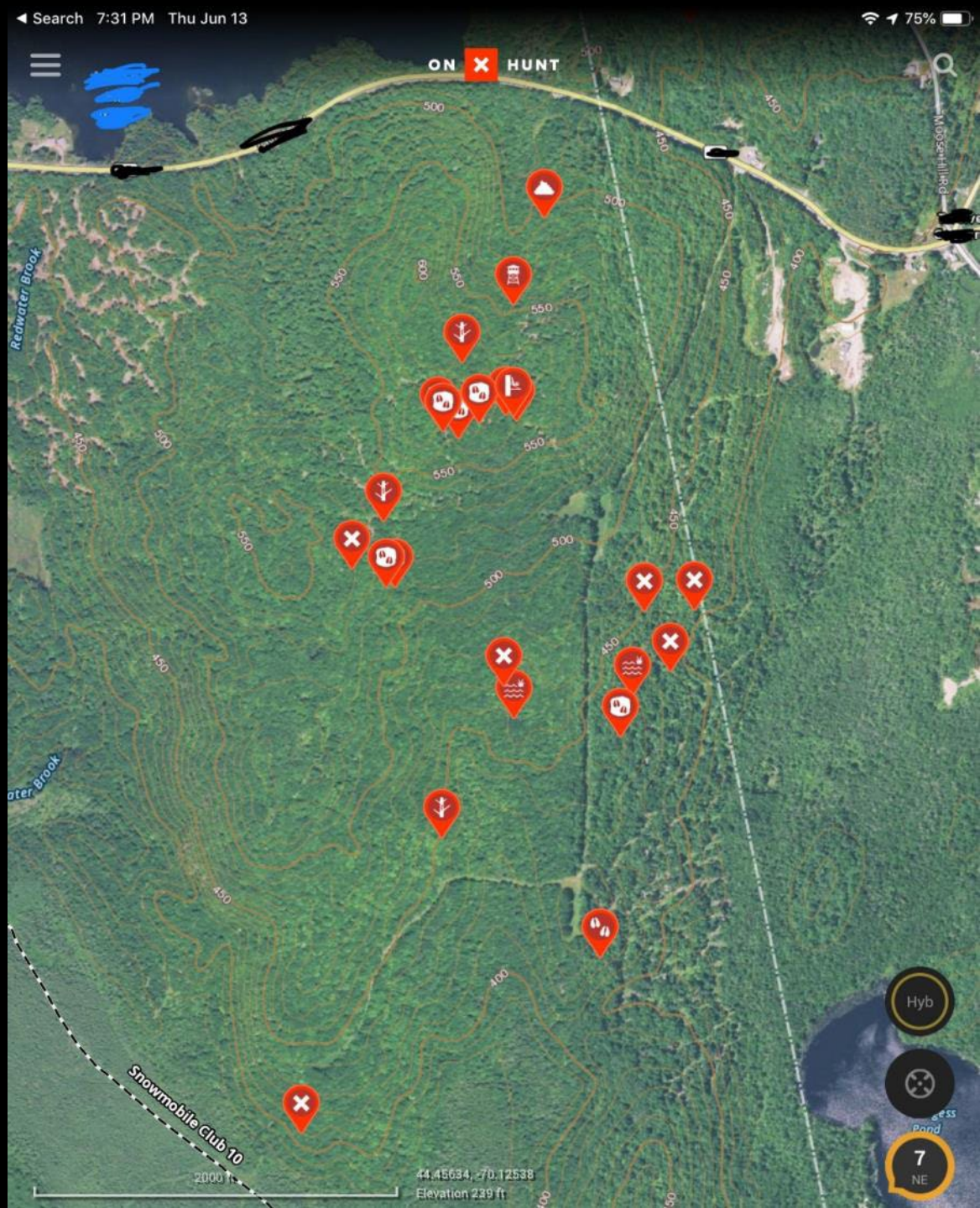


What does the
aerial
photography
add for detail?





Was there sign
where you
expected?





Trails & Trail
Crossings

Humans

**Sign to
Find**

Rubs &
Scrapes

Feeding
Areas





Ground Truthing

Develop a systematic approach

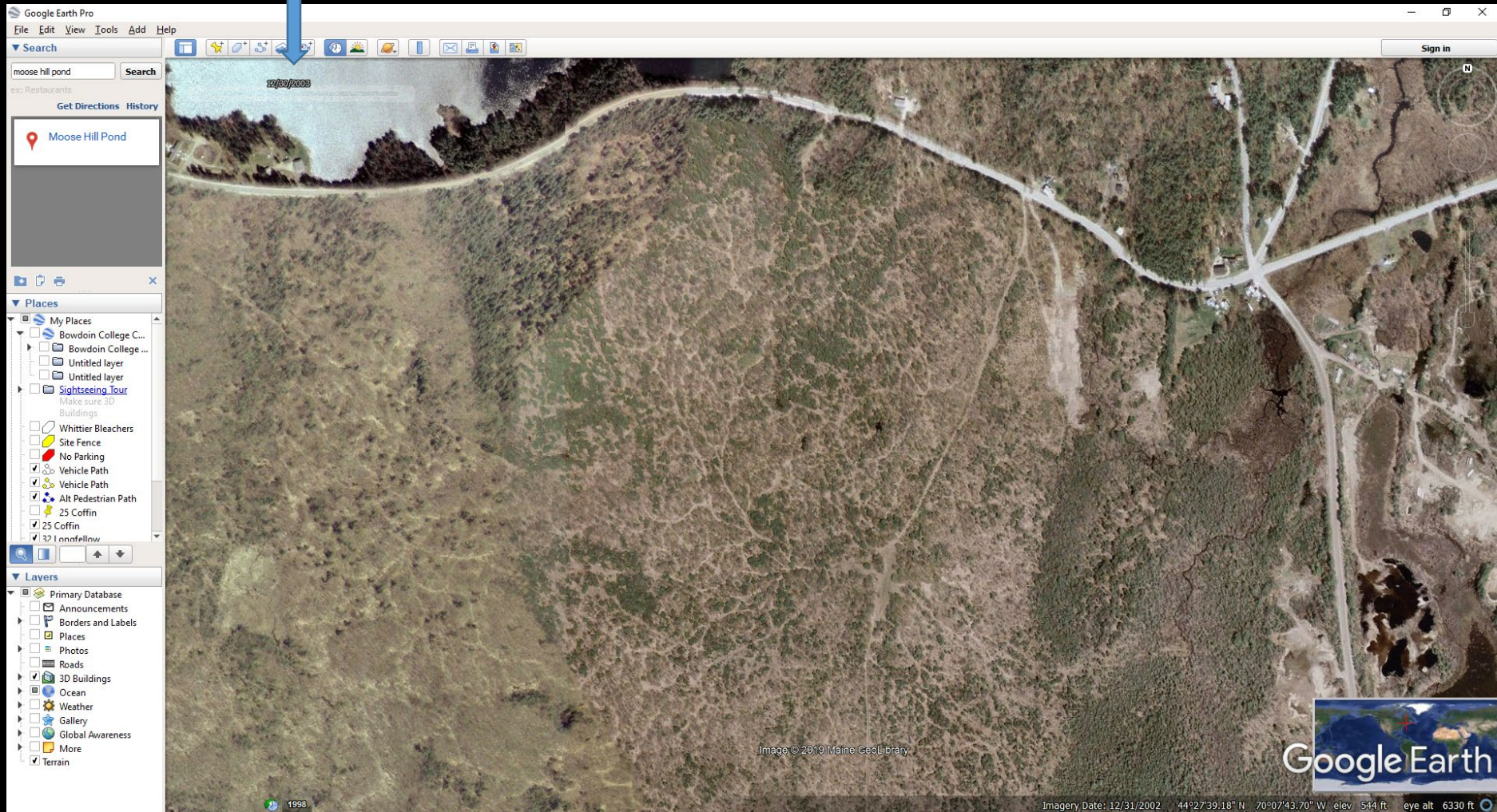
- Note key features in your on-line tool.
- Hike to key features
- GPS All Sign & Potential Stand Locations
 - Develop easy naming (BD=beds, TR= trail)
 - Use in Google Earth and/or App
 - Store in property specific folder
- Take notes & Pics
 - Memories fade
- Be aware of seasonality
 - Summer is challenging, winter is best





Google Earth Timeline

December
2003





Google Earth Timeline

June 2018

Google Earth Pro

File Edit View Tools Add Help

Search

moose hill pond Search

Get Directions History

Moose Hill Pond

Places

- My Places
 - Bowdoin College C...
 - Bowdoin College ...
 - Untitled layer
 - Untitled layer
 - Sightseeing Tour
 - Make sure 3D
 - Buildings
 - Whittier Bleachers
 - Site Fence
 - No Parking
 - Vehicle Path
 - Vehicle Path
 - Alt Pedestrian Path
 - 25 Coffin
 - 25 Coffin
 - 371 nnnafellnw

Layers

- Primary Database
 - Announcements
 - Borders and Labels
 - Places
 - Photos
 - Roads
 - 3D Buildings
 - Ocean
 - Weather
 - Gallery
 - Global Awareness
 - More
 - Terrain

1998

Imagery Date: 6/21/2018 44°27'52.41" N 70°08'04.60" W elev 469 ft eye alt 6330 ft

Google Earth

1:50 PM 9/10/2019



Google Earth -Putting the Puzzle Together

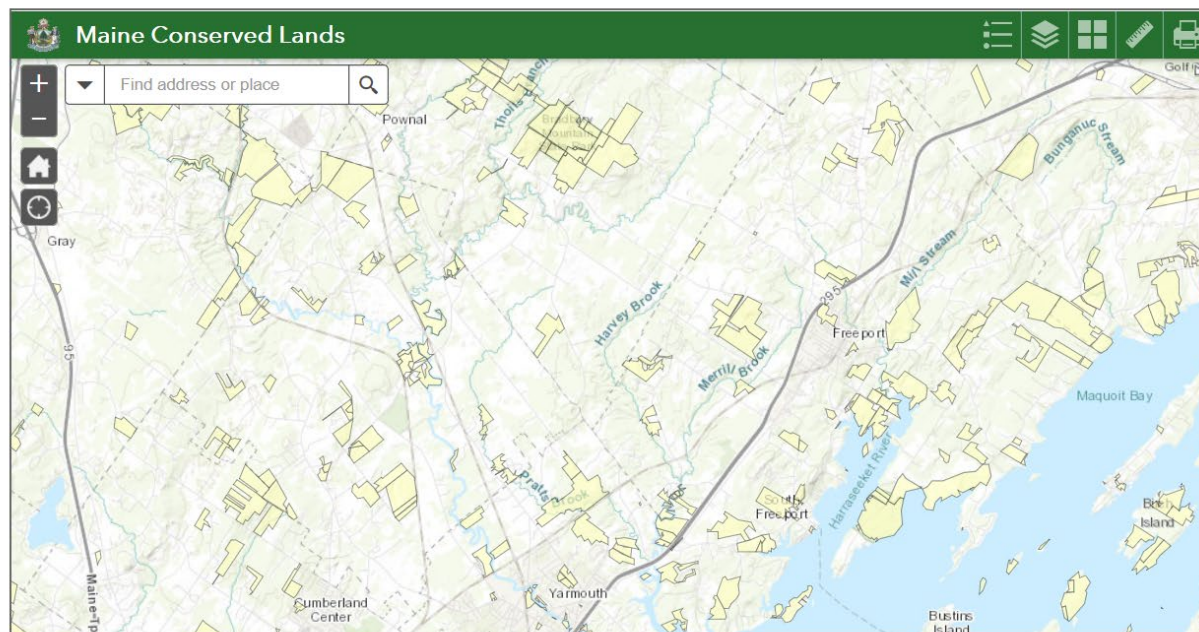




About MNAP
Focus Areas
Communities, Plants and Animals
Maps, Data, and Technical Assistance
Forest Management Plan Review
Forestry Technical Assistance
Information Requests
Site Review
Outreach
Beginning with Habitat
Ecological Reserves

Maine Conserved Lands Map

NOTE: Map data does not draw at all scales. Zoom in on the map to view data.





Town Websites- Tax Maps

Tax Map .PDF'S

The following Assessor's maps were created for the September 2018 tax commitment.

If you want to find the map/lot number of an individual property, navigate to our [online assessor's database](#), and search by address or owner name.

Attachment	Size
 Map Index	859.74 KB
 Map 1	234.85 KB
 Map 2	233.13 KB
 Map 3	281.28 KB
 Map 4	224.55 KB
 Map 5	249.85 KB
 Map 5a	257.51 KB
 Map 6	268.61 KB
 Map 7	188.34 KB
 Map 8	202.87 KB
 Map 9	227.5 KB
 Map 10	242.72 KB
 Map 11	234.46 KB
 Map 12	239.56 KB
 Map 13	266.17 KB
 Map 14	258.21 KB
 Map 15	211.69 KB
 Map 16	194.34 KB
 Map 17	394.2 KB
 Map 18	528.74 KB
 Map 19	603 KB
 Map 20	1,061 KB



Town Websites- GIS

Browser window showing a GIS application for Brunswick, ME. The address bar displays <https://www.axisgis.com/brunswickme/>.

The application interface includes a top navigation bar with links: [Maine Office of GIS](#), [Maine Natural Areas Progra](#), [Maps | Freeport ME](#), [Search | Town of Brunswick](#), [Town of Brunswick How Dc](#), and [Brunswick, ME](#).

The main map area displays a detailed land use map of Brunswick, ME, showing property boundaries, roads, and water bodies. A tooltip for parcel 29-4 is visible, indicating it is in the Brunswick, Town of, and is located on O Bunganuc Rd.

The left sidebar contains a search bar and buttons for [Search](#), [Abutters](#), and [Layers](#). The bottom status bar shows coordinates: X: -70.00413, Y: 43.87064, and a scale bar indicating 0, 300, and 600 feet.



Hunting Specific Apps- HuntStand

Verizon 2:13 PM 56%

HuntStand
Orrs Island

Mapping
Distance Area Markers Lines Shapes

HuntZone™

Property Boundaries

Weather
64 °F
30.39 inHg

Solunar
86%
Waxing Gibbous

Land for Sale

Newsfeed

Map Printing

Sharing

Videos

Trail Cam Management

WEATHER UPDATED Sep 10, 2019 at 2:12 PM

Verizon 2:13 PM 55%

HuntZone™
Orrs Island

100 yards
75
50
25

72-Hour Wind Speed Chart (MPH)

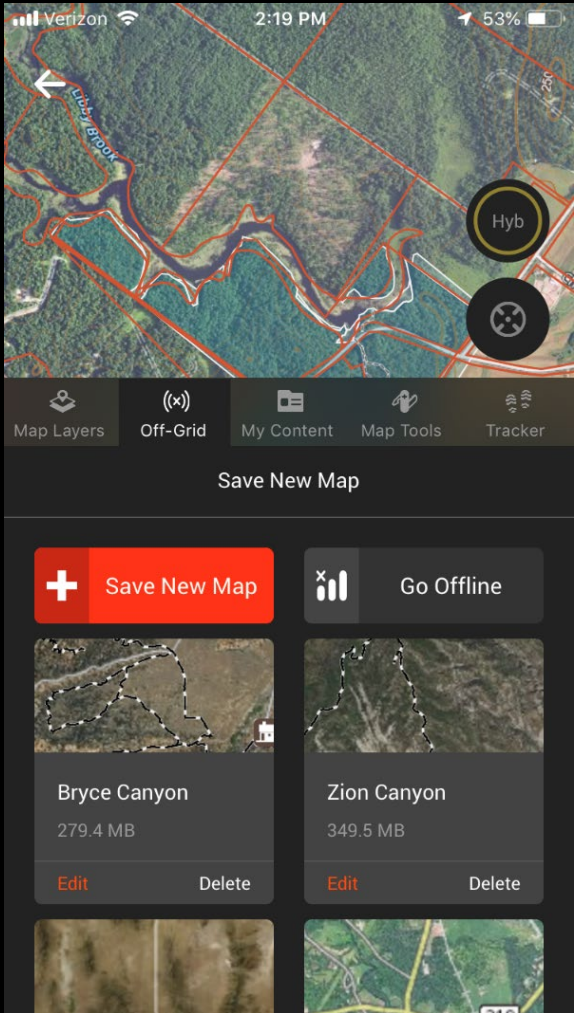
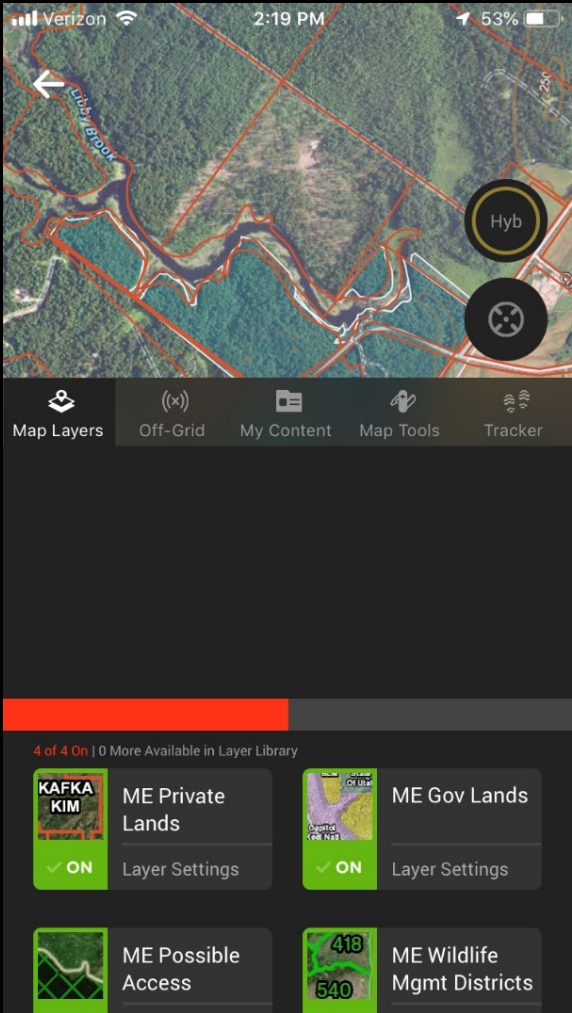
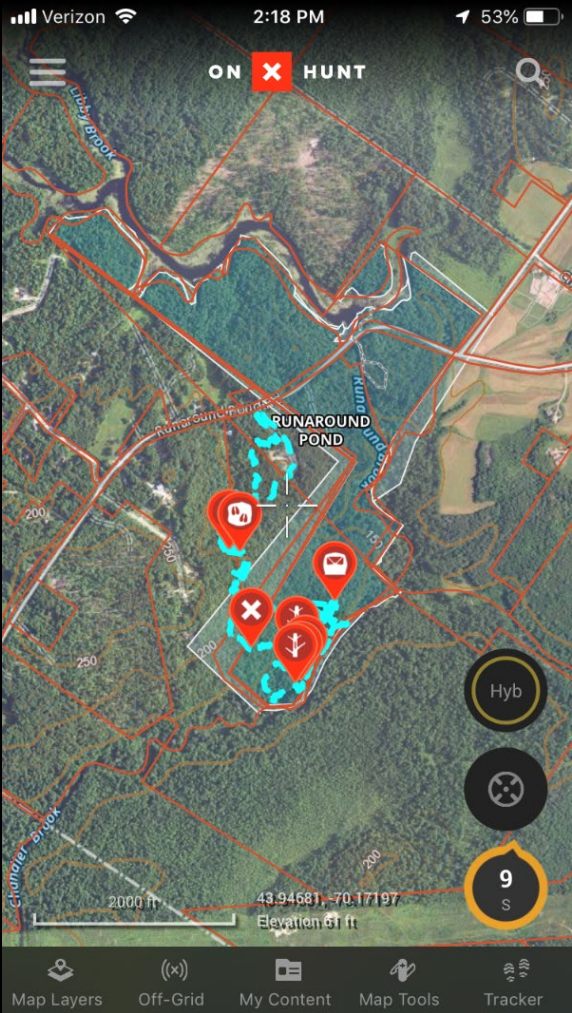
Now 12h 24h 36h 48h 60h 72h
Wed Thu Fri

Verizon 2:14 PM 55%

Property Boundaries
Orrs Island



Hunting Specific Apps- OnX Hunt





Other Apps

- Garmin-
 - Earthmate- Device, Handheld GPS or In-Reach
 - Explore- Newer Handheld GPS
 - HuntView (not for Maine)- Hunting specific layers
- Gaia GPS- Tracks, georeferenced photos, waypoints.
- BaseMap 3D
- ScoutLook



Results....





*The Sportsman's voice for our wild
public lands, waters, and wildlife*